

XCENTER DIGITAL

**Simplify Sales Order for SAP
Digital Transformation**

21 December 2021

xTractor

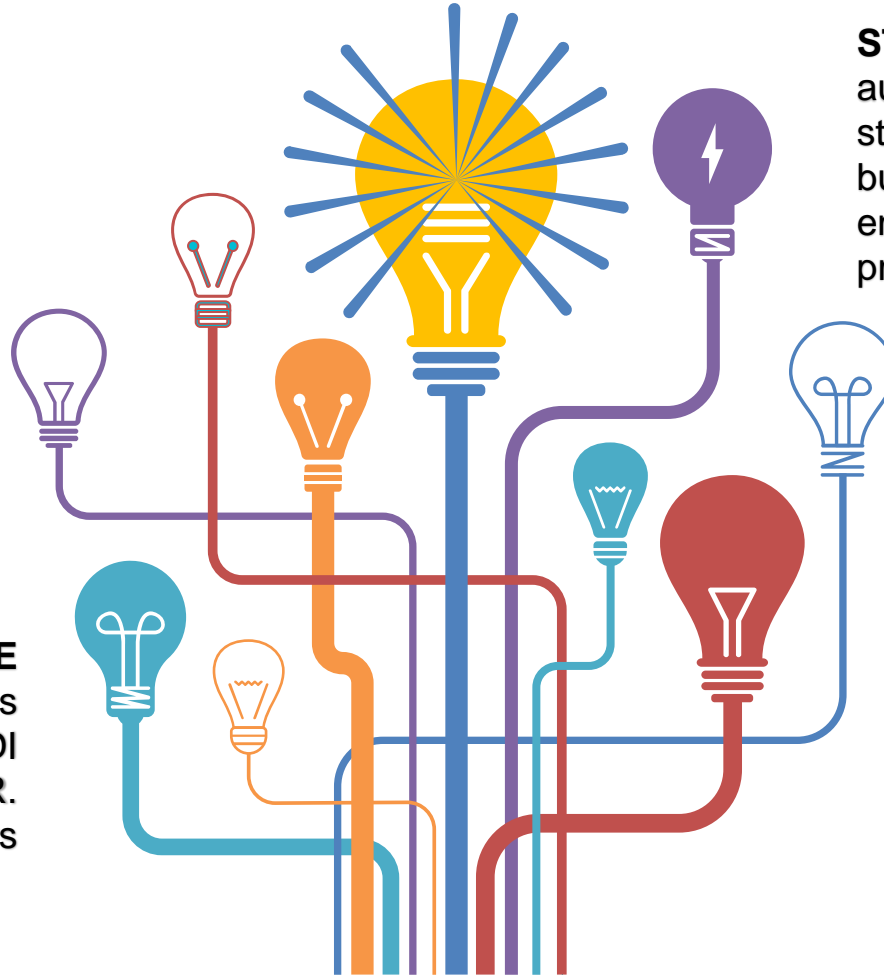
*Sales Order*TM

TRANSFORMATION

- ▶ Better Customer Service
- ▶ Less Order Entry Time
 - ▶ Better Data Control
 - ▶ Faster Shipping
 - ▶ Happier staff
 - ▶ Less Costs

CAPTURE

automatically extract sales order data from PDF and EDI files 100% accurately, no OCR. Eliminate data entry errors



STREAMLINE

automate major order processing steps and manage complex business rules to simplify order entry & fulfilment, speed up processing & resolve discrepancies

INTEGRATE IN SAP

SAP-integrated, built-in data validation workflow, transformation, image and archiving

OUTPERFORM

remove processing obstacles, improve visibility into order status, and free resources to better serve customers.

xTractor Sales Order SAP - Overview

- ✓ **Accurate customer order capture**
 - 100% accurate - no use of Optical Character Recognition (OCR)
 - Data-map or 'template' per customer (one-time effort)

- ✓ **Integration with SAP**
 - Data exported to SAP order buffer list (no IDOC with SD sales order creation)
 - Data validation and transformation
 - Order image and e-mail archiving

- ✓ **SD Sales Order creation**
 - Automated or manual creation with transaction VA01
 - Monitoring

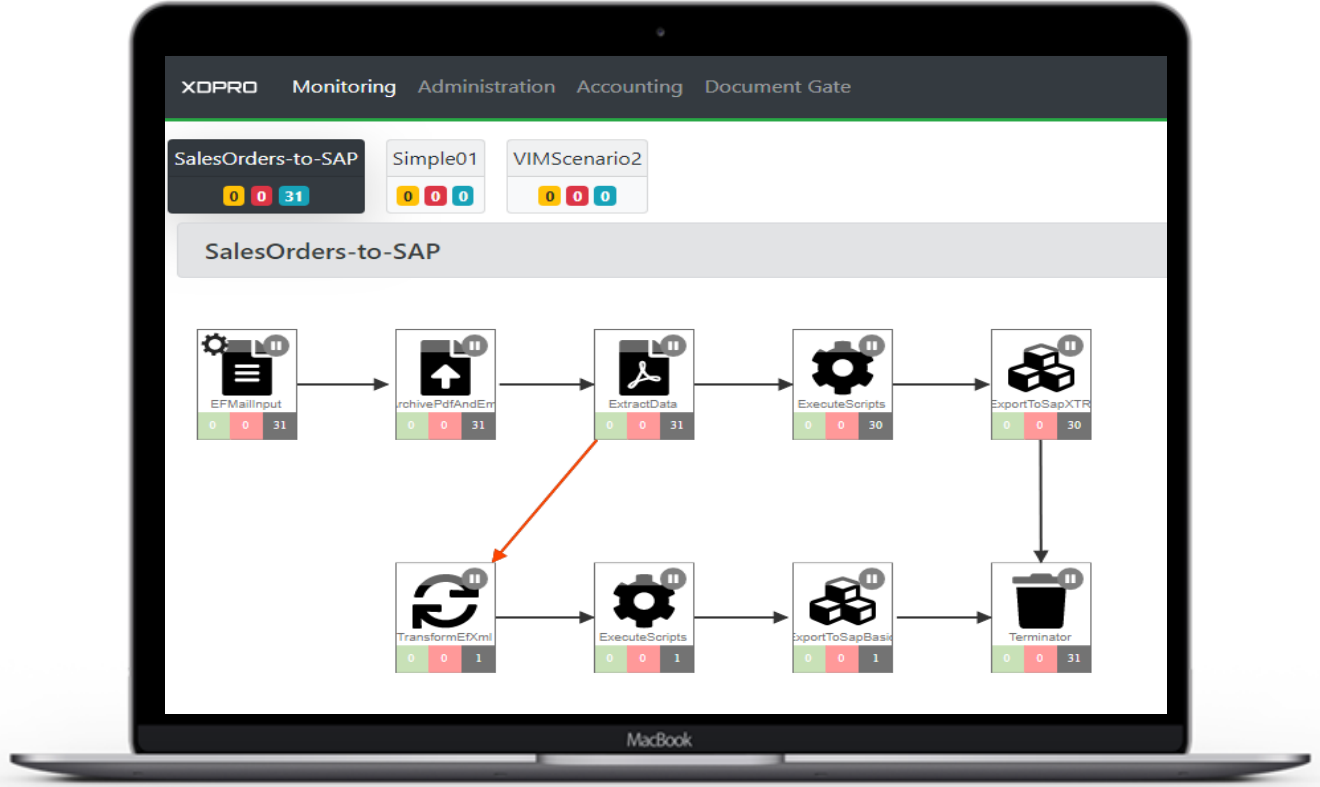
xTractor for SAP Sales Orders

xTractor for SAP Sales Orders Components

1. **xTractor's core engine xDPRO** for set-up, customisation and PDF data extraction process monitoring
2. **xTractor Designer** to create a data-map per Customer [PDF] sales order lay-out
3. **xTractor Sales Order SAP** for data export to SAP, data processing in SAP, sales order creation in SAP (xTractor set up, processing, monitoring, data check, creation)

xTractor Sales Order SAP – Monitoring

✓ XCD Monitoring



xTractor Sales Order SAP – Document Capture

✓ Document Capture

- Paper scanning (full-text extraction module)
- Process PDF attached to emails with xDPRO
- PDF data parsing & extraction tool “xTractor”
 - Graphical UI tool to create data-maps / templates
 - Data-map / template creation per customer

The screenshot displays the xTractor software interface. The main window shows a PDF document with various fields highlighted in green, indicating they have been successfully captured. The interface is divided into several panels:

- Rule definitions list:** A list of rules used for document capture, including 'Anchor to Due date: [1]', 'Anchor to Order number: [1]', 'Anchor to Issue date: [1]', 'Anchor to Tax date: [1]', 'Anchor to VAT: [1]', 'Anchor to Total net price... [1]', 'Anchor to Total tax exclusive amount', 'Anchor to Total gross price... [1]', 'Anchor to Total tax inclusive amount', 'LocalCurrencyCode', 'Linetype', 'Header [1]', and 'Columns [1]'.
- Rule definition property inspector:** A panel on the right showing the properties of the selected rule, including 'Name', 'DueDate', 'Color', 'Parent', 'Scope', 'Area', 'Anchors', 'Rel. X coord', 'Rel. Y coord', 'Width', 'Height', 'Field', 'Transformations & Validators', and 'Raw value'.
- Table:** A table at the bottom of the document showing extracted data for various items, including product names, quantities, and prices.

Item	Quantity	Unit Price	Total Price	Tax
Amplifier F162 with pre-amp, cables, cables Product no: F162-567-925Q	9 pcs	1 460,13	13 141,17	15%
Display unit DU420 Product no: DU420-879-579I	9 pcs	1 321,38	11 892,42	15%
Projector unit PU250 with data interface Product no: PU250-558-981H	10 pcs	16 396,95	163 969,50	21%
Amplifier F725 with mount kit, connectors Product no: F725-557-295B	9 pcs	1 479,40	13 314,60	15%
Power supply P946 with mount kit, ventilator	5 pcs	1 184,96	5 924,80	21%

xTractor Sales Order SAP – Data Export to SAP

- ✓ **Data Export to SAP**
 - Field transfer to SAP tables
 - RFC call
 - SAP function module
 - Document Archiving

- ✓ **SAP data preparation**
 - Field mapping
 - Scenario for Sales Order creation

xDPRO Document application customizing	
xDPRO Appl	Text
XTR_SD	XCD SD semiautomatic processing
XTR_SDAUTO	XCD SD auto processing
XTR_SDEDI	XCD SD EDI processing
XTR_SDMAN	XCD SD full manual processing

xD Map typ
From XML File
From XML File
Constant (fixed value)
System variable
Function Module

xDPRO Document Mapping table				
xDPRO Appl	External field name	Hierar.typ	Field Name	xD Map typ
XTR_SD	BARCODE	Header	BARCODE	From XML File
XTR_SD	BUYERCUSTOMERELE...	Header	INPUT_MAIL	From XML File
XTR_SD	COMPANYCODEBILLED	Header	BUKRS_VF	From XML File
XTR_SD	CUSTOMERORDERID	Header	BSTKD	From XML File
XTR_SD	DELIVERYPARTYID	Header	KUNWE	From XML File
XTR_SD	DOCUMENTCURRENCY...	Header	WAERK	From XML File
XTR_SD	ISSUEDATE	Header	BSTDK	From XML File
XTR_SD	LATESTDELIVERYDA...	Header	VDATU	From XML File
XTR_SD	LINECURRENCYCODE	Items	WAERK	From XML File
XTR_SD	LINEDESCRIPTION	Items	MAKTX	From XML File
XTR_SD	LINEID	Items	XDITEM	From XML File
XTR_SD	LINENETAMOUNT	Items	NETWR	From XML File
XTR_SD	LINEQUANTITY	Items	ZMENG	From XML File
XTR_SD	LINEUNITCODE	Items	VRKME	From XML File
XTR_SD	LOSSRISKRESPONSI...	Header	INCO1	From XML File
XTR_SD	PRJAPPLICATION	Header	APPLICATION	From XML File
XTR_SD	PRJDISTCHANNEL	Header	VTWEG	Constant (fixed va
XTR_SD	PRJDIVISION	Header	SPART	Constant (fixed va

xTractor Sales Order SAP – Data processing application

✓ SAP Application set-up

- Customizing for accessible fields
 - Edit/View
 - Obligatory
 - F4
- Field check, data integrity check

Header data			
Basic Data		Details	
xDPRO Internal doc. ...	0000000146	Sales Office	
Bar code		Sales Group	
Created on	16.06.2021	Gross order value	1 216,00
Sales Document Type	OR	Net value	1 216,00
Sold-to party	0000001135	Document Currency	GBP
Sales Organization	1000	Reference document	
Distribution Channel	12	Pricing date	16.06.2021
Division	00	Billing block	
Text		Ship-to party	0000001140

xDPRO Document Mapping table				
xDPRO Appl	External field name	Hierar.typ	Field Name	xD Map typ
XTR_SD	BARCODE	Header	BARCODE	From XML File
XTR_SD	BUYERCUSTOMERELE...	Header	INPUT_MAIL	From XML File
XTR_SD	COMPANYCODEBILLED	Header	BUKRS_VF	From XML File
XTR_SD	CUSTOMERORDERID	Header	BSTKD	From XML File
XTR_SD	DELIVERYPARTYID	Header	KUNWE	From XML File
XTR_SD	DOCUMENTCURRENCY...	Header	WAERK	From XML File
XTR_SD	ISSUEDATE	Header	BSTDK	From XML File
XTR_SD	LATESTDELIVERYDA...	Header	VDATU	From XML File
XTR_SD	LINECURRENCYCODE	Items	WAERK	From XML File
XTR_SD	LINEDESCRIPTION	Items	MAKTX	From XML File
XTR_SD	LINEID	Items	XDITEM	From XML File
XTR_SD	LINENETAMOUNT	Items	NETWR	From XML File
XTR_SD	LINEQUANTITY	Items	ZMENG	From XML File
XTR_SD	LINEUNITCODE	Items	VRKME	From XML File
XTR_SD	LOSSRISKRESPONSI...	Header	INCO1	From XML File
XTR_SD	PRJAPPLICATION	Header	APPLICATION	From XML File
XTR_SD	PRJDISTCHANNEL	Header	VIWEG	Constant (fixed va
XTR_SD	PRJDIVISION	Header	SPART	Constant (fixed va

xTractor Sales Order SAP – Sales order creation SAP

✓ Monitoring and processing

ID	xD doc. no	xDPRO Appl Code	Sales Doc. Text	Ref.doc.	Created on	E-mail	Sold-to pt	Ship-to	Doc. Date
▲	146	XTR_SD			16.06.2021	tiverton@rgbld.co.uk	1135	1140	10.12.2019
▲	144	XTR_SD			07.02.2021	okehampton@rgbld.co.uk	1135	1136	10.12.2019
▲	143	XTR_SD			07.02.2021	okehampton@rgbld.co.uk	1135	1136	10.12.2019
▲	142	XTR_SD			07.02.2021	bideford@rgbld.co.uk	1135	1138	10.12.2019
▲	141	XTR_SD			07.02.2021	paignton@rgbld.co.uk	1135	1137	10.12.2019
▲	140	XTR_SD			07.02.2021	holsworthy@rgbld.co.uk	1135	1139	10.12.2019
▲	139	XTR_SD			07.02.2021	tiverton@rgbld.co.uk	1135	1140	10.12.2019
▲	138	XTR_SD			07.02.2021	bideford@rgbld.co.uk	1135	1138	10.12.2019
▲	136	XTR_SD	12162	40000203	11.08.2020	okehampton@rgbld.co.uk	1172	1172	10.12.2019
▲	132	XTR_SD	12161		13.07.2020	tiverton@rgbld.co.uk	1135	1140	10.12.2019
▲	131	XTR_SD			13.07.2020	tiverton@rgbld.co.uk	1135	1140	10.12.2019
▲	129	XTR_SD	Wait		10.06.2020	tiverton@rgbld.co.uk	1135	1140	10.12.2019
▲	128	XTR_SD	Please wait		10.06.2020	okehampton@rgbld.co.uk	1135	1136	10.12.2019
▲	127	XTR_SD			10.06.2020	bideford@rgbld.co.uk	1135	1138	10.12.2019
▲	126	XTR_SD			10.06.2020	paignton@rgbld.co.uk	1135	1137	10.12.2019
▲	125	XTR_SD			10.06.2020	holsworthy@rgbld.co.uk	1135	1139	10.12.2019
▲	124	XTR_SD	12159		10.06.2020	tiverton@rgbld.co.uk	1135	1140	10.12.2019

Select SD documents for processing									
Document state									
<input checked="" type="checkbox"/>	Unprocessed documents								
<input checked="" type="checkbox"/>	Completed documents								
<input type="checkbox"/>	Deleted documents								
Communication data									
xDpro Application	XTR_SD								
Internal doc. number		to							
Bar code		to							
Created on		to							
E-mail		to							
Document data									
Sales Document		to							
Document Date		to							
SD document categ.		to							
Sales Document Type		to							
Sales Organization		to							
Distribution Channel		to							
Division		to							
Sales Group		to							
Sales Office		to							
Document Currency		to							
Gross order value		to							
PO number		to							
Pricing date		to							
	0007/07458055	OR	1000	12	00	GBP			
	0008/08467711	OR	1000	12	00	GBP			
	0012/12467746	OR	1000	12	00	GBP			

xTractor Sales Order SAP – Sales order creation SAP

✓ Sales order data check

Process document: XTR_SD/0000000146

Check Save Create Sales Order Delete E-mail

Header data

Basic Data Details

xDPRO Internal doc. ...	0000000146	Sales Office	
Bar code		Sales Group	
Created on	16.06.2021	Gross order value	1 216,00
Sales Document Type	OR	Net value	1 216,00
Sold-to party	0000001135	Document Currency	GBP
Sales Organization	1000	Reference document	
Distribution Channel	12	Pricing date	16.06.2021
Division	00	Billing block	
Text		Ship-to party	0000001140

Item data

Insert Row Copy Delete Row

ItCa	Material	Material Description	Target quantity	UoM	Net value	Curr.
T...	E896301	SANDRINGHAM 21 CLOSE COUPLED WC BOWL HOR	12,000		288,00	GBP
TAN	E896601	SANDRINGHAM 21 C/COUPLED CISTERN WITH DU	15,000		330,00	GBP
TAN	E131601	SANDRINGHAM 21 UNI SEAT AND COVER TSEA00	12,000		108,00	GBP



RGB Building Supplies
A company well built

Tiverton Branch
5 Woodward Rd
Howden Ind Est
Tiverton
Devon EX16 5GZ
Tel: 01884 235999
Email: tiverton@rgb ltd.co.uk
Web: www.rgb ltd.co.uk

Purchase Order Order Number
0012/12467746

To:-
IDEAL STANDARD INTERNATIONAL
THE BATHROOM WORKS #
NATIONAL AVENUE
KINGSTON UPON HULL
YORKSHIRE
HU5 4HS

Deliver to:-
Tiverton
5 Woodward Road
Howden Industrial Estate
Tiverton
Devon
EX16 5GZ

Account	Our Operator	Order Date	Time
001135	Jenna Griffiths	10/12/2019	16:03
Your Contact	Your Reference	Page	
		1	

Please use our Purchase Order Number for all communications

Quantity	Product	Unit price	Line value
12 EA	E896301 SANDRINGHAM 21 CLOSE COUPLED WC BOWL HORIZONTAL OUTLET TPAN0054	24.00 EA	288.00
15 EA	E896601 SANDRINGHAM 21 C/COUPLED CISTERN WITH DUAL FLUSH VALVE 6/4L CIST0061	22.00 EA	330.00
12 EA	E131601 SANDRINGHAM 21 UNI SEAT AND COVER	9.00 EA	108.00

xTractor Sales Order SAP – Sales order creation SAP

✓ SD Sales Order creation (using batch input)

Create Standard Order: Overview

Standard Order: Net value: 1 216,00 GBP

Sold-to party: 1135 Rawle Gammon & Baker Holdings Ltd / Riverside Road / Barnst...

Ship-to party: 1140 Rawle Gammon & Baker Holdings Ltd / 5 Woodward Rd / Tver...

PO Number: 0012/12467746 PO date: 10.12.2019

Sales | Item overview | Item detail | Ordering party | Procurement | Shipping | Reason for rejection

Req. deliv.date: D 02.07.2021 Deliver.Plant:

Complete dv. Total Weight: 0 KG

Delivery block: Volume: 0,000

Billing block: Pricing date: 16.06.2021

Payment card: Exp.date:

Card Verif.Code:

Payment terms: ZB01 14 Days 3%, 30/2... Incoterms: CIF Hamburg

Order reason:

All items

Item	Material	Order Quantity	Un	Description	S	Customer Material Numb	ItCa	DGIP	HL Itm	D	First Date	Plnt
10	E896301	12	EA	SAND 21 C/C BWL HO...	✓		TAK			D	02.07.2021	
20	E896601	15	EA	SAND 21 CISTERN BSI...	✓		TAK			D	02.07.2021	
30	E131601	12	EA	S21 UNI SEAT & CVR ...	✓		TAK			D	02.07.2021	
40	E894501	10	EA	SAND 21 BASIN 50X4...	✓		TAK			D	02.07.2021	
50	E894601	10	EA	SAND 21 BASIN 50X4...	✓		TAK			D	02.07.2021	
60	E897601	10	EA	SAND 21 FULLER W...	✓		TAK			D	02.07.2021	